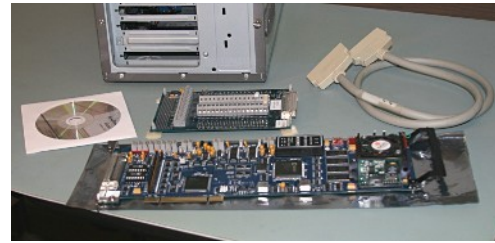


# DAP-PCI Quick Install

(Full installation guide in *DAPtools Software manuals*)

## 1. Collect the hardware parts.

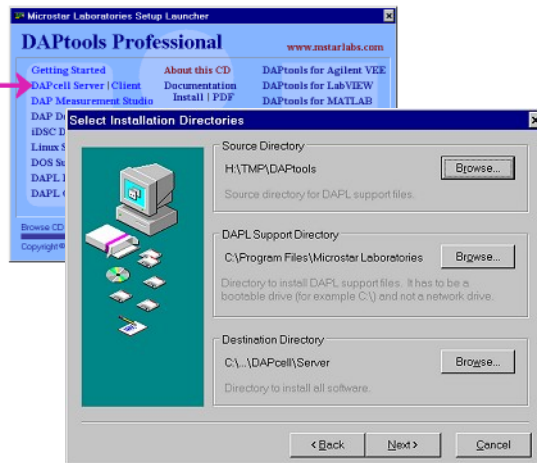
- DAP board
- signal cable
- termination board



## 2. Verify that you have current software:

[mstarlabs.com/software/new.html](http://mstarlabs.com/software/new.html)

- *Windows*: XP, Vista, Server 2008, 7, 8, 10,
- *DAPtools*: Basic, Standard, Professional

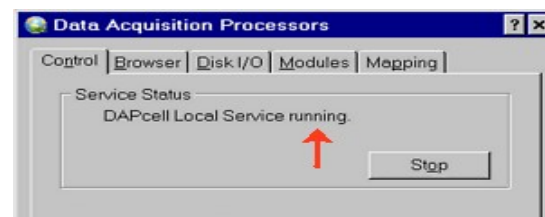


## 3. Install software on host PC first.

- Find the DAPtools CD or disk image
- Run the setup.exe installer program
- Click "Getting Started" and review
- Select "Install DAPcell Server"

Accept suggested install locations  
Wait for software to install  
Select "Finish"

- Exit the setup application.



## 4. Verify server software installation.

- Activate Windows "Control Panel"
- Run "Data Acquisition Processor" app
- Select the "Control" tab
- Verify "DAPcell Service running"



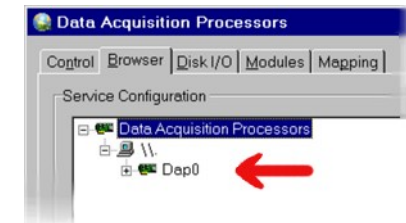
## 5. Install DAP hardware.

- Shut down computer
- Disconnect from power
- Open case
- Install DAP board in open PCI slot  
Press firmly, rock gently to seat board  
Secure bracket to back with screw
- Close case, reattach devices and power
- Attach signal cable to DAP connector
- Attach signal cable to termination board



## 6. Verify installation.

- Boot Windows system
- Activate Windows Control Panel
- Run "Data Acquisition" app
- Select the "Browser" tab
- Verify that the DAP board is seen
- If not: reboot system



## 7. Verify signals.

- Run setup.exe from DAPtools
- Select "DAP Measurement Studio" and install
- Click *Start!* in DAPstudio main menu
- Look for signals in graphical display